



# Gatwick Airport Northern Runway Project

Environmental Statement

Appendix 8.10.1 – Tree Survey Report and Arboricultural Impact Assessment - Part 2

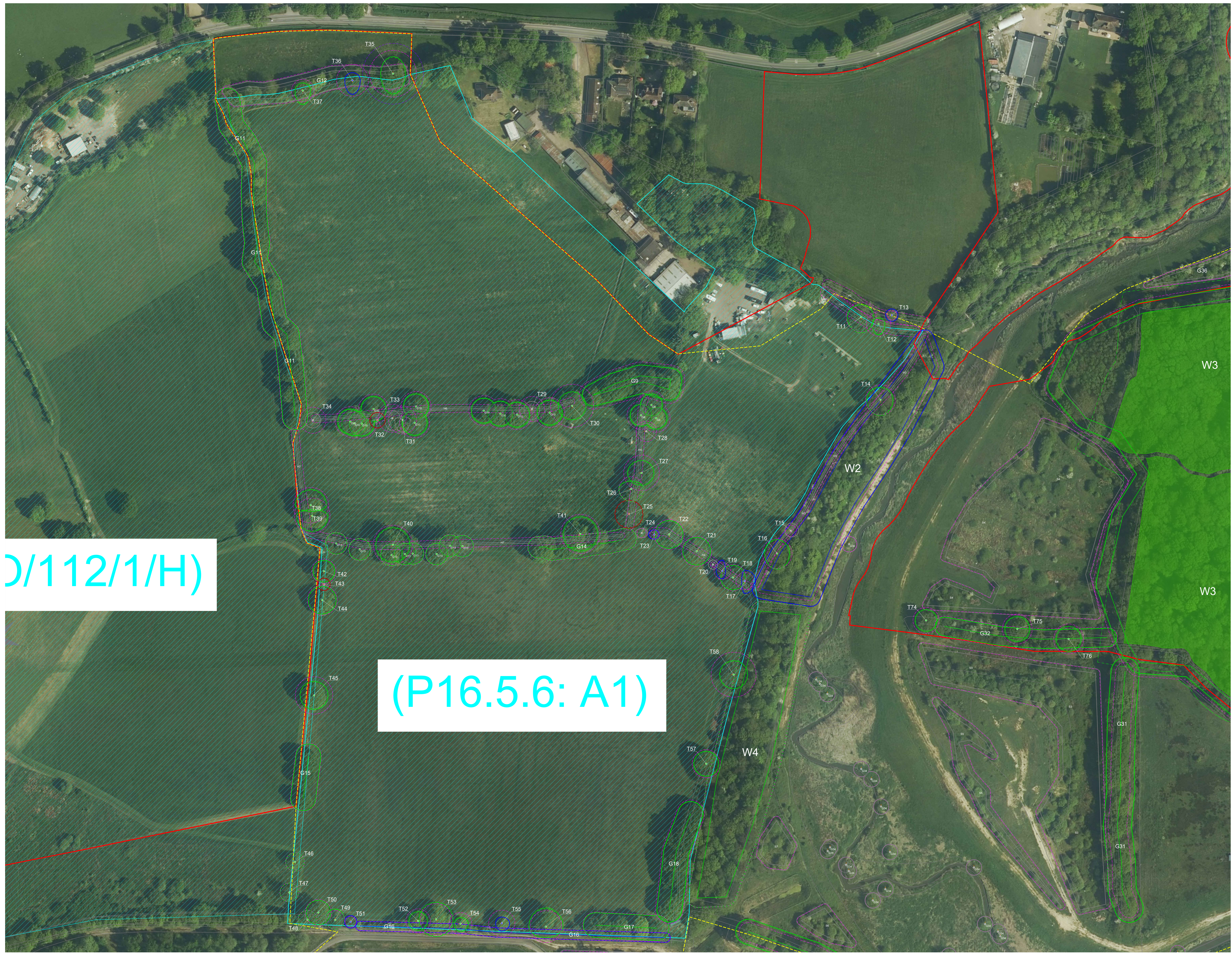
**Book 5**

VERSION: 1.0

DATE: MARCH 2024

Application Document Ref: 5.3

PINS Reference Number: TR020005

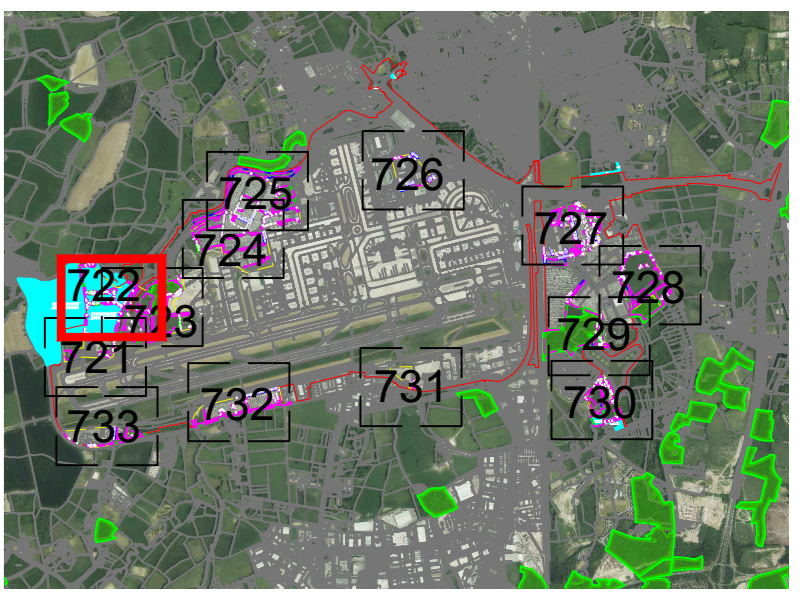


**Key**

- Red Line boundary.
  - Survey boundary.
  - Tree with numbered reference. Canopy spread and coloured BS5837:2012 tree quality category as shown below.
    - Tree details estimate (accessible tree)
    - Tree in off site location
  - Tree group plotted with individual stem locations and numbered reference. Canopy extents coloured to match BS5837:2012 tree quality category as shown below.
  - Tree or Vegetation group with numbered reference. Canopy extents coloured to match BS5837:2012 tree quality category as shown below and dashed line to show indicative stem line.
  - Hedge with numbered reference. Canopy extents and coloured BS5837:2012 tree quality category as shown below and dashed line to show hedge centerline.
  - Woodland with numbered reference. Canopy extents coloured to match BS5837:2012 tree quality category as shown below and dashed line to show indicative tree line.
- BS 5837:2012 Tree Quality Categories - Table 1**
- Category A - High quality
  - Category B - Moderate quality
  - Category C - Low quality
  - Category U - Unsuitable for retention
- Direction of first significant branch
  - Root protection area (RPA). Calculated in accordance with Section 4.6 - BS5837:2012
  - Veteran tree buffer (15 x stem Ø) (as per standing advice produced by Forestry England and Natural England)
  - Tree protected by Tree Preservation Order. Bracketted number reference relates to the TPO Schedule.
  - Designated Ancient Woodland (as per Natural England ancient woodland inventory, via open data publication)
  - Ancient Woodland tree buffer (15m offset) (as per standing advice produced by Forestry England and Natural England)

- NOTES:**
- Refer to RPS Tree Survey Report & Schedule for further details.
  - Survey based on a visual inspection from the ground and is not intended as a full arboricultural inspection.
  - Plan produced in accordance with recommendations set out in BS 5837:2012 - 'Trees in Relation to design, demolition and construction'.
  - Due to the legal protection afforded to breeding birds vegetation removal should not take place during the bird nesting period; generally, although not restricted to, March - August inclusive.
  - Survey based upon Aerial Photography and trees located by eye.

**Key Plan**



**DOCUMENT**

Environmental Statement

**DRAWING TITLE**

Airport Tree Survey Plans  
Appendix 8.10.1  
Sheet 2 of 13

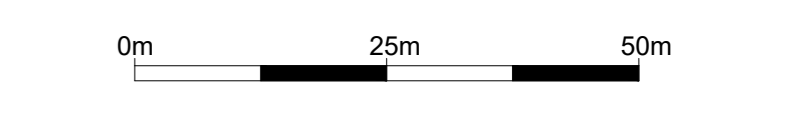
**DATE**

January 2024

**ORIENTATION**

N 	DRAWING NO.	REVISION
	722	For ES Issue
	DRAWN BY	PM / CHECKED BY
	RC	DC

**SCALE @ A0**



Reproduced from Ordnance Survey map with the permission of Ordnance Survey on behalf of the controller of Her Majesty's Stationery Office © Crown Copyright (2023). License number 010031673, 10001998, 100048492.  
© Copyright 2023 Gatwick Airport Limited. No part of this drawing is to be reproduced without prior permission of Gatwick Airport Limited.

D/112/1/H)

(P16.5.6: A1)



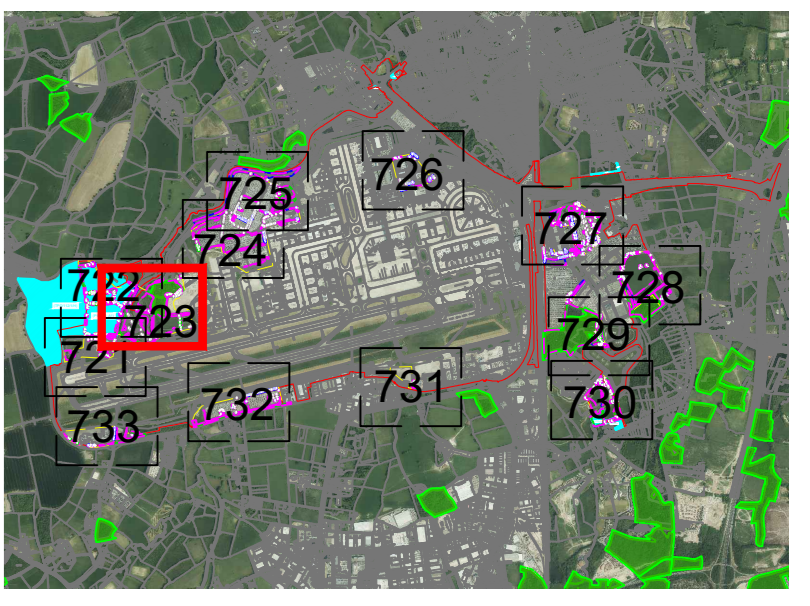
5.6: A1)

**Key**

- Red Line boundary.
  - Survey boundary.
  - Tree with numbered reference. Canopy spread and coloured BS5837:2012 tree quality category as shown below.
    - Tree details estimate (inaccessible tree)
    - Tree in off site location
  - G1 Tree group plotted with individual stem locations and numbered reference. Canopy extents coloured to match BS5837:2012 tree quality category as shown below and dashed line to show indicative stem line.
  - G1 Tree or Vegetation group with numbered reference. Canopy extents coloured to match BS5837:2012 tree quality category as shown below and dashed line to show indicative stem line.
  - H1 Hedge with numbered reference. Canopy extents coloured to match BS5837:2012 tree quality category as shown below and dashed line to show hedge centerline.
  - W1 Woodland with numbered reference. Canopy extents coloured to match BS5837:2012 tree quality category as shown below and dashed line to show indicative tree line.
- BS 5837:2012 Tree Quality Categories - Table 1**
- Category A - High quality
  - Category B - Moderate quality
  - Category C - Low quality
  - Category U - Unsuitable for retention
- Direction of first significant branch
  - Root protection area (RPA). Calculated in accordance with Section 4.6 - BS5837:2012
  - Veteran tree buffer (15 x stem Ø) (as per standing advice produced by Forestry England and Natural England)
  - Tree protected by Tree Preservation Order. Bracketted number reference relates to the TPO Schedule.
  - Designated Ancient Woodland (as per Natural England ancient woodland inventory, via open data publication)
  - Ancient Woodland tree buffer (15m offset) (as per standing advice produced by Forestry England and Natural England)

- NOTES:**
- Refer to RPS Tree Survey Report & Schedule for further details.
  - Survey based on a visual inspection from the ground and is not intended as a full arboricultural inspection.
  - Plan produced in accordance with recommendations set out in BS 5837:2012 - "Trees in Relation to design, demolition and construction".
  - Due to the legal protection afforded to breeding birds, vegetation removal should not take place during the bird nesting period; generally, although not restricted to, March - August inclusive.
  - Survey based upon Aerial Photography and trees located by eye.

**Key Plan**



**DOCUMENT**

Environmental Statement

**DRAWING TITLE**

Airport Tree Survey Plans  
Appendix 8.10.1  
Sheet 3 of 13

**DATE**

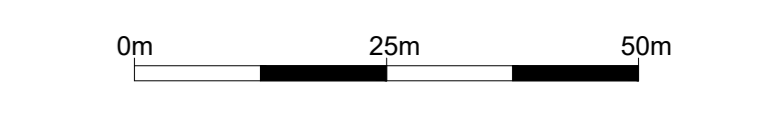
January 2024

**ORIENTATION**



DRAWING NO.	REVISION
723	For ES Issue
DRAWN BY RC	PM / CHECKED BY DC

**SCALE @ A0**



Reproduced from Ordnance Survey map with the permission of Ordnance Survey on behalf of the controller of Her Majesty's Stationery Office © Crown Copyright (2023). License number 0100031673, 10001998, 100048492.  
© Copyright 2023 Gatwick Airport Limited. No part of this drawing is to be reproduced without prior permission of Gatwick Airport Limited.



### Key

- Red Line boundary.
- Survey boundary.
- Tree with numbered reference. Canopy spread and coloured BS5837:2012 tree quality category as shown below.
  - Tree details estimate (inaccessible tree)
  - Tree in off site location
- G1 Tree group plotted with individual stem locations and numbered reference. Canopy extents coloured to match BS5837:2012 tree quality category as shown below and dashed line to show indicative stem line.
- G1 Tree or Vegetation group with numbered reference. Canopy extents coloured to match BS5837:2012 tree quality category as shown below and dashed line to show indicative stem line.
- H1 Hedge with numbered reference. Canopy extents coloured to match BS5837:2012 tree quality category as shown below and dashed line to show hedge centerline.
- W1 Woodland with numbered reference. Canopy extents coloured to match BS5837:2012 tree quality category as shown below and dashed line to show indicative tree line.

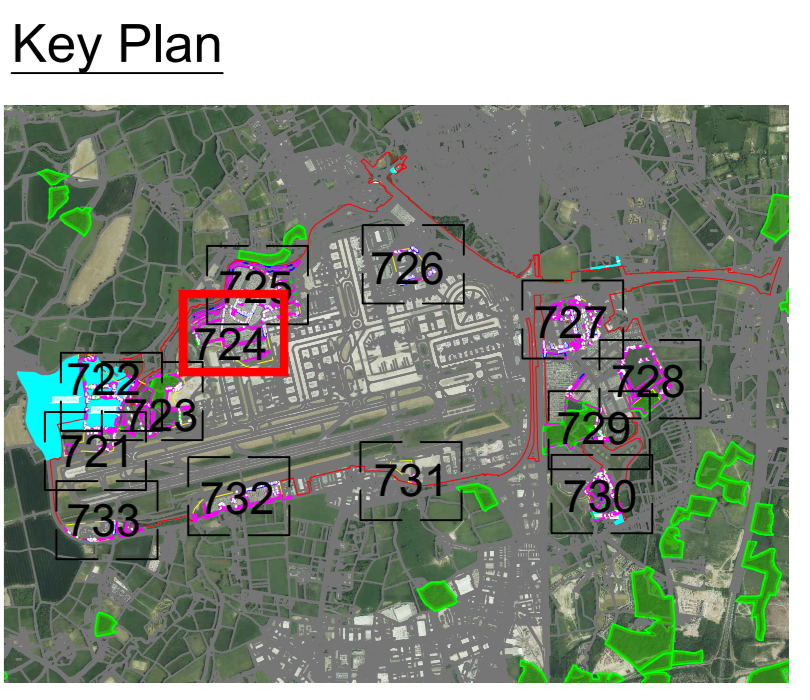
BS 5837:2012 Tree Quality Categories - Table 1

- Category A - High quality
- Category B - Moderate quality
- Category C - Low quality
- Category U - Unsuitable for retention

- Direction of first significant branch
- Root protection area (RPA) Calculated in accordance with Section 4.6 - BS5837:2012
- Veteran tree buffer (15 x stem Ø) (as per standing advice produced by Forestry England and Natural England)
- Tree protected by Tree Preservation Order: Bracketted number reference relative to the TPO Schedule.
- Designated Ancient Woodland (as per Natural England ancient woodland inventory, via open data publication)
- Ancient Woodland tree buffer (15m offset) (as per standing advice produced by Forestry England and Natural England)

**NOTES:**

- Refer to RPS Tree Survey Report & Schedule for further details.
- Survey based on a visual inspection from the ground and is not intended as a full arboricultural inspection.
- Plan produced in accordance with recommendations set out in BS 5837:2012 - 'Trees in Relation to design, demolition and construction'.
- Due to the legal protection afforded to breeding birds vegetation removal should not take place during the bird nesting period; generally, although not restricted to March - August inclusive.
- Survey based upon Aerial Photography and trees located by eye.



DOCUMENT

**Environmental Statement**

DRAWING TITLE

**Airport Tree Survey Plans  
Appendix 8.10.1  
Sheet 4 of 13**

DATE

**January 2024**

ORIENTATION	DRAWING NO.	REVISION
	724	For ES Issue
	DRAWN BY	PM / CHECKED BY
	RC	DC

SCALE @ A0

0m 25m 50m

Reproduced from Ordnance Survey map with the permission of Ordnance Survey on behalf of the controller of Her Majesty's Stationery Office © Crown Copyright (2023). License number 010031673, 10004892, 10004892.

© Copyright 2023 Gatwick Airport Limited. No part of this drawing is to be reproduced without prior permission of Gatwick Airport Limited.



**Key**

- Red Line boundary.
- Survey boundary.
- Tree with numbered reference. Canopy spread and coloured BS5837:2012 tree quality category as shown below.
  - Tree details estimate (inaccessible tree)
  - Tree in off site location
- Tree group plotted with individual stem locations and numbered reference. Canopy extents coloured to match BS5837:2012 tree quality category as shown below and dashed line to show indicative stem line.
- Hedge with numbered reference. Canopy extents and coloured BS5837:2012 tree quality category as shown below and dashed line to show hedge centerline.
- Woodland with numbered reference. Canopy extents coloured to match BS5837:2012 tree quality category as shown below and dashed line to show indicative tree line.

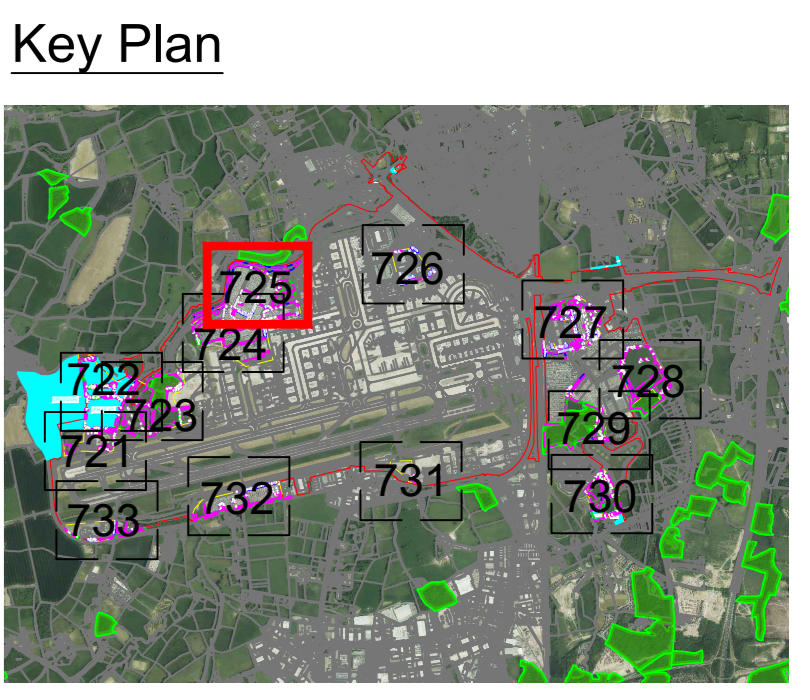
**BS 5837:2012 Tree Quality Categories - Table 1**

- Category A - High quality
- Category B - Moderate quality
- Category C - Low quality
- Category U - Unsuitable for retention

- Direction of first significant branch
- Root protection area (RPA). Calculated in accordance with Section 4.6 - BS5837:2012
- Veteran tree buffer (15 x stem Ø) (as per standing advice produced by Forestry England and Natural England)
- Tree protected by Tree Preservation Order. Bracketted number reference relates to the TPO Schedule.
- Designated Ancient Woodland (as per Natural England ancient woodland inventory, via open data publication)
- Ancient Woodland tree buffer (15m offset) (as per standing advice produced by Forestry England and Natural England)

**NOTES:**

- Refer to RPS Tree Survey Report & Schedule for further details.
- Survey based on a visual inspection from the ground and is not intended as a full arboricultural inspection.
- Plan produced in accordance with recommendations set out in BS 5837:2012 - 'Trees in Relation to design, demolition and construction'.
- Due to the legal protection afforded to breeding birds, vegetation removal should not take place during the bird nesting period; generally, although not restricted to, March - August inclusive.
- Survey based upon Aerial Photography and trees located by eye.



DOCUMENT

**Environmental Statement**

---

DRAWING TITLE

**Airport Tree Survey Plans**  
Appendix 8.10.1  
Sheet 5 of 13

DATE **January 2024**

ORIENTATION N	DRAWING NO. 725	REVISION For ES Issue
	DRAWN BY RC	PM / CHECKED BY DC

SCALE @ A0  
0m 25m 50m

Reproduced from Ordnance Survey map with the permission of Ordnance Survey on behalf of the controller of Her Majesty's Stationery Office © Crown Copyright (2023). License number 010031073, 10001998, 100048492.  
© Copyright 2023 Gatwick Airport Limited. No part of this drawing is to be reproduced without prior permission of Gatwick Airport Limited.



**Key**

- Red Line boundary.
- Survey boundary.
- Tree with numbered reference. Canopy spread and coloured BS5837:2012 tree quality category as shown below.
  - Tree details estimate (inaccessible tree)
  - Tree in off site location
- Tree group plotted with individual stem locations and numbered reference. Canopy extents coloured to match BS5837:2012 tree quality category as shown below.
- Tree or Vegetation group with numbered reference. Canopy extents coloured to match BS5837:2012 tree quality category as shown below and dashed line to show indicative stem line.
- Hedge with numbered reference. Canopy extents coloured to match BS5837:2012 tree quality category as shown below and dashed line to show hedge centerline.
- Woodland with numbered reference. Canopy extents coloured to match BS5837:2012 tree quality category as shown below and dashed line to show indicative tree line.

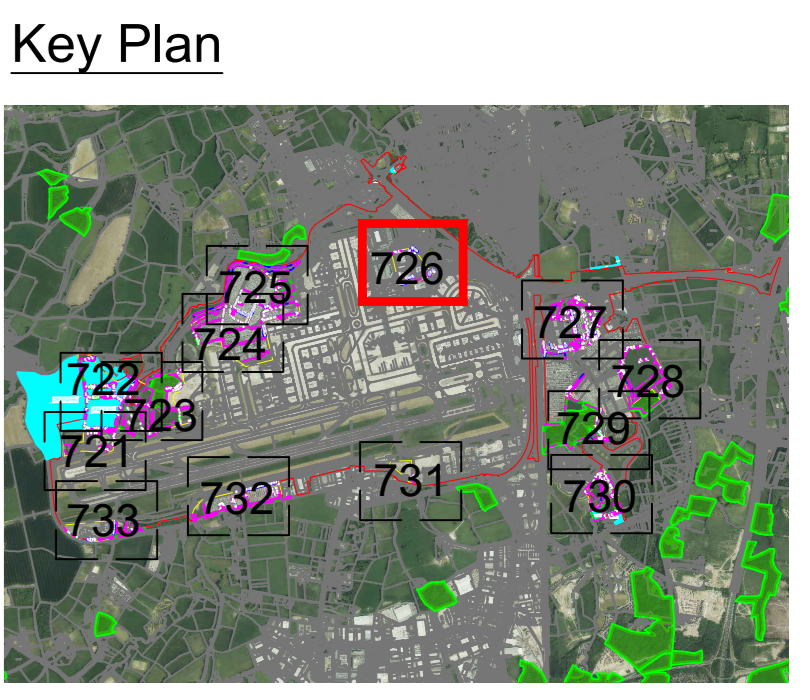
**BS 5837:2012 Tree Quality Categories - Table 1**

- Category A - High quality
- Category B - Moderate quality
- Category C - Low quality
- Category U - Unsuitable for retention

- Direction of first significant branch
- Root protection area (RPA). Calculated in accordance with Section 4.6 - BS5837:2012
- Veteran tree buffer (15 x stem Ø) (as per standing advice produced by Forestry England and Natural England)
- Tree protected by Tree Preservation Order. Bracketted number reference relates to the TPO Schedule.
- Designated Ancient Woodland (as per Natural England ancient woodland inventory, via open data publication)
- Ancient Woodland tree buffer (15m offset) (as per standing advice produced by Forestry England and Natural England)

**NOTES:**

- Refer to RPS Tree Survey Report & Schedule for further details.
- Survey based on a visual inspection from the ground and is not intended as a full arboricultural inspection.
- Plan produced in accordance with recommendations set out in BS 5837:2012 - 'Trees in Relation to design, demolition and construction'.
- Due to the legal protection afforded to breeding birds, vegetation removal should not take place during the bird nesting period, generally, although not restricted to March - August inclusive.
- Survey based upon Aerial Photography and trees located by eye.



DOCUMENT

**Environmental Statement**

---

DRAWING TITLE

**Airport Tree Survey Plans**  
Appendix 8.10.1  
Sheet 6 of 13

DATE **January 2024**

ORIENTATION N ▲	DRAWING NO. <b>726</b>	REVISION <b>For ES Issue</b>
	DRAWN BY <b>RC</b>	PM / CHECKED BY <b>DC</b>

SCALE @ A0  
0m 25m 50m

Reproduced from Ordnance Survey map with the permission of Ordnance Survey on behalf of the controller of Her Majesty's Stationery Office © Crown Copyright (2023). License number 0100031673, 10001998, 100048492.  
© Copyright 2023 Gatwick Airport Limited. No part of this drawing is to be reproduced without prior permission of Gatwick Airport Limited.



**Key**

- Red Line boundary.
- Survey boundary.
- Tree with numbered reference. Canopy spread and coloured BS5837:2012 tree quality category as shown below.
  - Tree details estimate (inaccessible tree)
  - Tree in off site location
- G1 Tree group plotted with individual stem locations and numbered reference. Canopy extents coloured to match BS5837:2012 tree quality category as shown below.
- G1 Tree or Vegetation group with numbered reference. Canopy extents coloured to match BS5837:2012 tree quality category as shown below and dashed line to show indicative stem line.
- H1 Hedge with numbered reference. Canopy extents coloured to match BS5837:2012 tree quality category as shown below and dashed line to show hedge centerline.
- W1 Woodland with numbered reference. Canopy extents coloured to match BS5837:2012 tree quality category as shown below and dashed line to show indicative tree line.

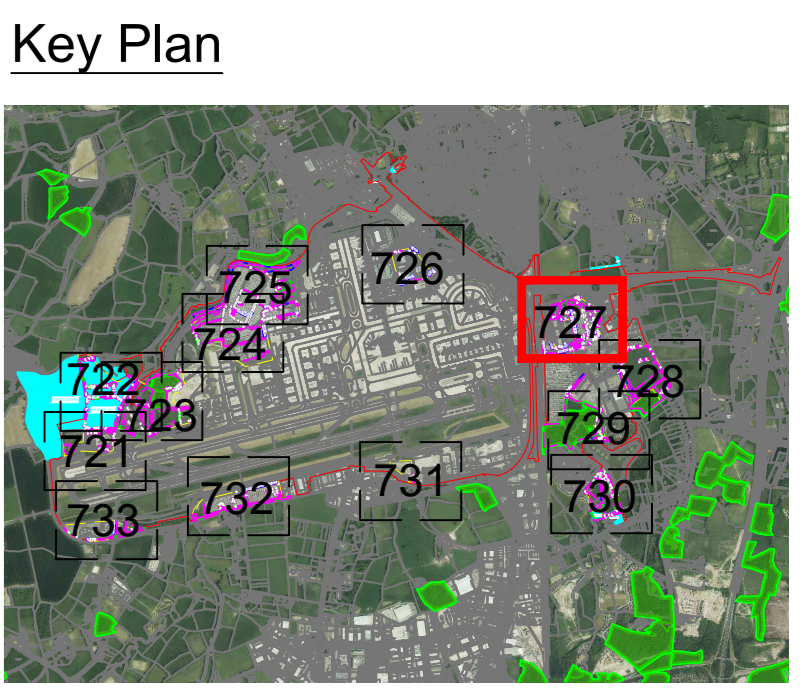
**BS 5837:2012 Tree Quality Categories - Table 1**

- Category A - High quality
- Category B - Moderate quality
- Category C - Low quality
- Category U - Unsuitable for retention

- Direction of first significant branch
- Root protection area (RPA) Calculated in accordance with Section 4.6 - BS5837:2012
- Veteran tree buffer (15 x stem Ø) (as per standing advice produced by Forestry England and Natural England)
- Tree protected by Tree Preservation Order: Bracketted number reference relates to the TPO Schedule.
- Designated Ancient Woodland (as per Natural England ancient woodland inventory, via open data publication)
- Ancient Woodland tree buffer (15m offset) (as per standing advice produced by Forestry England and Natural England)

**NOTES:**

- Refer to RPS Tree Survey Report & Schedule for further details.
- Survey based on a visual inspection from the ground and is not intended as a full arboricultural inspection.
- Plan produced in accordance with recommendations set out in BS 5837:2012 - 'Trees in Relation to design, demolition and construction'.
- Due to the legal protection afforded to breeding birds vegetation removal should not take place during the bird nesting period, generally, although not restricted to March - August inclusive.
- Survey based upon Aerial Photography and trees located by eye.



**DOCUMENT**

**Environmental Statement**

**DRAWING TITLE**

**Airport Tree Survey Plans**  
Appendix 8.10.1  
Sheet 7 of 13

**DATE** January 2024

<b>ORIENTATION</b>	<b>DRAWING NO.</b>	<b>REVISION</b>
	727	For ES Issue
<b>SCALE @ A0</b>	<b>DRAWN BY</b>	<b>PM / CHECKED BY</b>
	RC	DC

0m 25m 50m

Reproduced from Ordnance Survey map with the permission of Ordnance Survey on behalf of the controller of Her Majesty's Stationery Office © Crown Copyright (2023). License number 010031673, 10001998, 100048492.

© Copyright 2023 Gatwick Airport Limited. No part of this drawing is to be reproduced without prior permission of Gatwick Airport Limited.